

Anti-Succinyllysine Rabbit pAb

Catalog # PTM-401



General Information

Host species	Rabbit
Clonality	Polyclonal
Clone number	/
Synonym	Ksu

Immunogen species	UniProt	MW (kDa)	Applications
/	/	Multiple	WB, IHC-P, ICC/IF, IP

Product Usage Information

Application	Dilution	Recommended species
WB	1:500-1:1000	All
IHC-P	1:100-1:500	Human
ICC/IF	1:50-1:100	Human
IP	1:25-1:100	All species expected

Properties

Storage	Store at -20 °C. Avoid freeze / thaw cycles.
Stability	Stable for 12 months from date of receipt / reconstitution
Constituents	PBS, Glycerol, BSA
Purity	Antibodies are purified by protein A-conjugated agarose followed by succinyl lysine agarose affinity chromatography.
Isotype	IgG

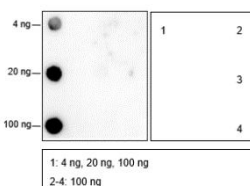
Target Information

Function	Succinylation is a posttranslational modification where a succinyl group (-CO-CH ₂ -CH ₂ -CO ₂ H) is added to a lysine residue of a protein molecule. This modification is found in many proteins, including histones. The potential role of succinylation is under investigation, but as addition of succinyl group changes lysine's charge from +1 to -1 (at physiological pH) and introduces a relatively large structural moiety (100 Da), bigger than acetylation (42 Da) or methylation (14 Da), it is expected to lead to more significant changes in protein structure and function.
----------	---

Cellular location	/
-------------------	---

Images

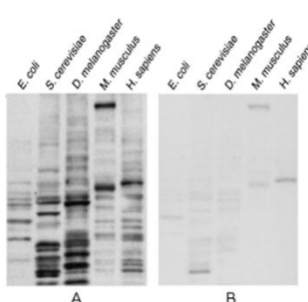
Dot Blot



Blocking buffer: 5% NFDM/TBST
Primary ab dilution: 1:2000
Primary ab incubation condition: 2 hours at room temperature
Secondary ab: Goat Anti-Rabbit IgG H&L (HRP)
Immunogen peptide quantity: 4 ng, 20 ng, 100 ng
Exposure time: 30 s
The list of peptides is included in the table below:

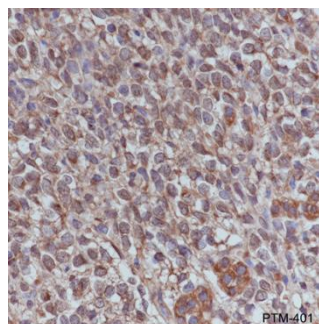
No.	Peptide	No.	Peptide
Lane 1	Ksu library	Lane 2	Kmal library
Lane 3	Kglu library	Lane 4	Control library

WB



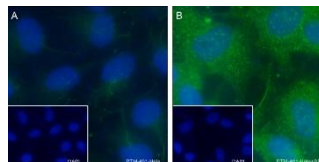
Blocking buffer: 5% NFDM/TBST
Primary ab dilution: 1:1000
Primary ab incubation condition: (A) PTM-401+unmodified BSA peptides, (B) PTM-401+ succinylated BSA peptides, 2 hours at room temperature
Secondary ab: Goat Anti-Rabbit IgG H&L (HRP)
Lysate: E.coli, S.cerevisiae, D.melanogaster, M.musculus, H. sapiens
Protein loading quantity: 20 µg
Exposure time: 60 s
Predicted MW: Multiple kDa
Observed MW: Multiple kDa

IHC-P



Tissue: Human neuroblastoma
Section type: Formalin fixed & Paraffin -embedded section
Retrieval method: High temperature and high pressure
Retrieval buffer: Tris/EDTA buffer, pH 9.0
Primary ab dilution: 1:500
Primary ab incubation condition: 1 hour at room temperature
Secondary ab: Anti-Rabbit and Mouse Polymer HRP (Ready to use)
Counter stain: Hematoxylin (Blue)
Comment: Color brown is the positive signal for PTM-401

ICC/IF



Cell line: A. HeLa; B. HeLa+SBA
Fixative: 4% Paraformaldehyde
Permeabilization: 0.1% TritonX-100
Primary ab dilution: 1:100
Primary incubation condition: 4°C overnight
Secondary ab: Goat Anti-Rabbit IgG
Nuclear counter stain: DAPI (Blue)
Comment: Color green is the positive signal for PTM-401

APPLICATIONS WB: Western blot IP: Immunoprecipitation
IHC-P: Immunohistochemistry-Paraffin ChIP: Chromatin Immunoprecipitation
ICC/IF: Immunocytochemistry/Immunofluorescence FC: Flow Cytometry

MODIFICATIONS ac: acetylated bbb: β-hydroxybutyrylated bu: butyrylated
bz: benzoylated cr: crotonylated hib: 2-hydroxyisobutyrylated la: lactylated
pr: propionylated su: succinylated un: unmodified

CONTACT US

Tel: 400-100-1145
Email: service@ptm-biolab.com
Web: www.ptm-biolab.com.cn

China

400-100-1145
service@ptm-biolab.com
www.ptm-biolab.com.cn

Global

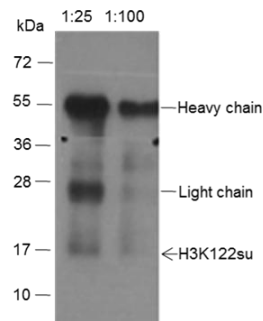
+1 312-802-6843
info@ptm-biolab.com
www.ptmbiolabs.com

Anti-Succinyllysine Rabbit pAb

Catalog # PTM-401



IP



IP of Mouse liver extracts
IP ab incubation condition: PTM-401, 4°C overnight, 1:25, 1:100 dilution
WB primary ab incubation condition: PTM-413, room temperature 2h, 1:1000 dilution
Secondary ab: Anti-Rabbit IgG for IP (HRP)
Blocking buffer and concentration: 5% NFDm/TBST
Diluting buffer and concentration: 5% NFDm/TBST
Lane 1: IP with PTM-401 (1:25)
Lane 2: IP with PTM-401 (1:100)
Observed MW: 17 kDa
Exposure time: 60 s

Research Use

For research use only, not for use in diagnostic procedures.

APPLICATIONS **WB:** Western blot **IP:** Immunoprecipitation
IHC-P: Immunohistochemistry-Paraffin **ChIP:** Chromatin Immunoprecipitation
ICC/IF: Immunocytochemistry/Immunofluorescence **FC:** Flow Cytometry

MODIFICATIONS **ac:** acetylated **bhb:** β-hydroxybutyrylated **bu:** butyrylated
bz: benzoylated **cr:** crotonylated **hib:** 2-hydroxyisobutyrylated **la:** lactylated
pr: propionylated **su:** succinylated **un:** unmodified

CONTACT US

	China	Global
Tel:	400-100-1145	+1 312-802-6843
Email:	service@ptm-biolab.com	info@ptm-biolab.com
Web:	www.ptm-biolab.com.cn	www.ptmbiolabs.com