

# Anti-SAM68 Rabbit pAb



Catalog # PTM-7046

## General Information

Host species	Rabbit
Clonality	Polyclonal
Clone number	/
Synonym	KHDRBS1, p68

Immunogen species	UniProt	MW (kDa)	Applications
Human	Q07666	68	WB, IHC-P

## Product Usage Information

Application	Dilution	Recommended species
WB	1:1000	Human
IHC-P	1:50-1:100	Human, Mouse, Rat

## Properties

Storage	Upon delivery aliquot. Store at -20°C. Avoid freeze / thaw cycles.
Stability	Stable for 12 months from date of receipt / reconstitution
Constituents	PBS, Glycerol, BSA
Purity	Protein A and antigen purified
Isotype	IgG

## Target Information

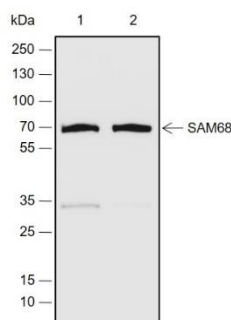
### Function

KHDRBS1, also named as SAM68, p62 and p68, belongs to the KHDRBS family. KHDRBS1 is a multi-functional protein with roles in signal transduction, cell cycle regulation, transcription, and alternative splicing. KHDRBS1 acts as a scaffold protein mediating responses to various stimuli that activate receptors, such as the T cell receptor and the insulin receptor, linking activation of various signal transduction pathways with post-transcriptional gene regulation. KHDRBS1 is a target for phosphorylation by Src-related kinases and Erk1/2 mitogen-activated protein kinases. Phosphorylation of KHDRBS1 regulates both its affinity for RNA and alternative splicing of RNAs like CD44 receptor mRNA. Many of the activities of KHDRBS1 and its targets for alternative splicing have been implicated in the development and progression of spinal muscular atrophy and cancers such as prostate and breast carcinomas, where KHDRBS1 is frequently upregulated.

**Cellular localization** Nucleus

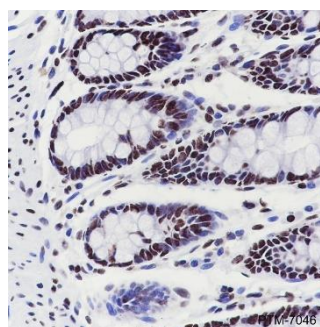
## Images

### WB

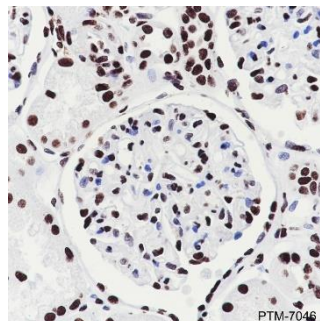


**Blocking buffer:** 5% NFD/MTBST  
**Primary Ab dilution:** 1:1000  
**Primary Ab incubation condition:** 2 hours at room temperature  
**Secondary Ab:** Goat Anti-Rabbit IgG H&L (HRP)  
**Lysate:** 1: Jurkat, 2: HCT-116  
**Protein loading amount:** 20 µg  
**Exposure time:** 60 s  
**Predicted MW:** 68 kDa  
**Observed MW:** 68 kDa

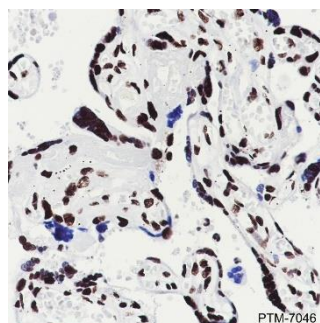
### IHC-P



**Tissue:** Human colon  
**Section type:** Formalin-fixed & paraffin-embedded section  
**Retrieval method:** High temperature and high pressure  
**Retrieval buffer:** Tris/EDTA buffer, pH 9.0  
**Primary Ab dilution:** 1:100  
**Primary Ab incubation condition:** 1 hour at room temperature  
**Secondary Ab:** Anti-Rabbit and Mouse Polymer HRP (Ready to use)  
**Counter stain:** Hematoxylin (Blue)  
**Comment:** Color brown is the positive signal for PTM-7046



**Tissue:** Human kidney  
**Section type:** Formalin-fixed & paraffin-embedded section  
**Retrieval method:** High temperature and high pressure  
**Retrieval buffer:** Tris/EDTA buffer, pH 9.0  
**Primary Ab dilution:** 1:100  
**Primary Ab incubation condition:** 1 hour at room temperature  
**Secondary Ab:** Anti-Rabbit and Mouse Polymer HRP (Ready to use)  
**Counter stain:** Hematoxylin (Blue)  
**Comment:** Color brown is the positive signal for PTM-7046



**Tissue:** Human placenta  
**Section type:** Formalin-fixed & paraffin-embedded section  
**Retrieval method:** High temperature and high pressure  
**Retrieval buffer:** Tris/EDTA buffer, pH 9.0  
**Primary Ab dilution:** 1:100  
**Primary Ab incubation condition:** 1 hour at room temperature  
**Secondary Ab:** Anti-Rabbit and Mouse Polymer HRP (Ready to use)  
**Counter stain:** Hematoxylin (Blue)  
**Comment:** Color brown is the positive signal for PTM-7046

**Please note:** This product is "FOR RESEARCH USE ONLY. NOT FOR USE IN DIAGNOSTIC PROCEDURES"

**APPLICATIONS** WB: Western blot IP: Immunoprecipitation  
IHC-P: Immunohistochemistry-Paraffin ChIP: Chromatin Immunoprecipitation  
ICC/IF: Immunocytochemistry/Immunofluorescence FC: Flow Cytometry

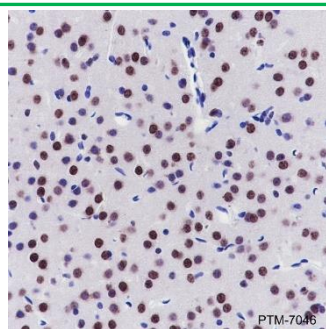
**CONTACT US**  
**Tel:** 400-100-1145  
**Email:** service@ptm-biolab.com  
**Web:** www.ptm-biolab.com.cn

**Global**  
+1 312-802-6843  
info@ptm-biolab.com  
www.ptmbiolabs.com

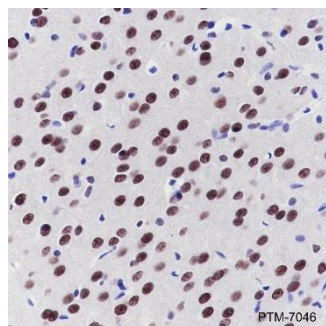
# Anti-SAM68 Rabbit pAb



Catalog # PTM-7046



**Tissue:** Mouse cerebrum  
**Section type:** Formalin-fixed & paraffin-embedded section  
**Retrieval method:** High temperature and high pressure  
**Retrieval buffer:** Tris/EDTA buffer, pH 9.0  
**Primary Ab dilution:** 1:100  
**Primary Ab incubation condition:** 1 hour at room temperature  
**Secondary Ab:** Anti-Rabbit and Mouse Polymer HRP (Ready to use)  
**Counter stain:** Hematoxylin (Blue)  
**Comment:** Color brown is the positive signal for PTM-7046



**Tissue:** Rat cerebrum  
**Section type:** Formalin-fixed & paraffin-embedded section  
**Retrieval method:** High temperature and high pressure  
**Retrieval buffer:** Tris/EDTA buffer, pH 9.0  
**Primary Ab dilution:** 1:100  
**Primary Ab incubation condition:** 1 hour at room temperature  
**Secondary Ab:** Anti-Rabbit and Mouse Polymer HRP (Ready to use)  
**Counter stain:** Hematoxylin (Blue)  
**Comment:** Color brown is the positive signal for PTM-7046

**Please note:** This product is "FOR RESEARCH USE ONLY. NOT FOR USE IN DIAGNOSTIC PROCEDURES"

**APPLICATIONS** WB: Western blot IP: Immunoprecipitation  
IHC-P: Immunohistochemistry-Paraffin ChIP: Chromatin Immunoprecipitation  
ICC/IF: Immunocytochemistry/Immunofluorescence FC: Flow Cytometry

**CONTACT US**  
Tel:  
Email:  
Web:

**China**  
400-100-1145  
service@ptm-biolab.com  
www.ptm-biolab.com.cn

**Global**  
+1 312-802-6843  
info@ptm-biolab.com  
www.ptmbiolabs.com