

Anti-2-Hydroxyisobutyryllysine Rabbit pAb

Catalog # PTM-801



General Information

Host species Rabbit
Clonality Polyclonal
Clone number /
Synonym Khib

Immunogen species	UniProt	MW (kDa)	Applications
/	/	Multiple	WB

Product Usage Information

Application WB
Dilution 1:500-1:2000
Recommended species All (Predicted)

Properties

Storage Store at -20 °C. Avoid freeze / thaw cycles.
Stability Stable for 12 months from date of receipt / reconstitution
Constituents PBS, Glycerol, BSA
Purity Antibodies are purified by protein A-conjugated agarose followed by 2-hydroxyisobutyryllysine agarose affinity chromatography.
Isotype IgG

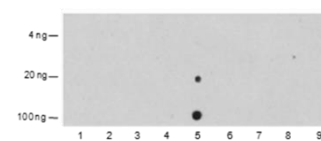
Target Information

Function Histones are subjected to a variety of enzyme catalyzed modifications, including acetylation, methylation, ubiquitylation, etc. 2-hydroxyisobutyrylation of lysine is a newly identified reversible modification controlling chromosome structure and gene transcription. The reversible lysine 2-hydroxyisobutyrylation has been well demonstrated in eukaryotic histones from worm to human. The unique structure and genomic localization of histone lysine 2-hydroxyisobutyrylation suggest that it is mechanistically and functionally different from histone lysine acetylation.

Cellular location /

Images

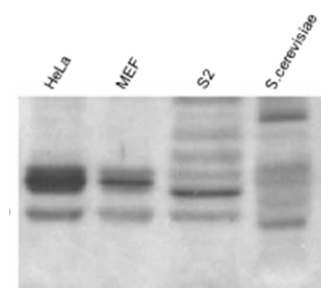
Dot Blot



Blocking buffer: 5% NFDM/TBST
Primary ab dilution: 1:2000
Primary ab incubation condition: 2 hours at room temperature
Secondary ab: Goat Anti-Rabbit IgG H&L (HRP)
Immunogen peptide quantity: 4 ng, 20 ng, 100 ng
Exposure time: 60 s
The list of peptides is included in the table below:

No.	Peptide	No.	Peptide
Lane 1	Kac library	Lane 2	Kbu library
Lane 3	Kcr library	Lane 4	Control library
Lane 5	Khib library	Lane 6	Khb library
Lane 7	Kbhb library	Lane 8	Kbhib library
Lane 9	K4bh library		

WB



Blocking buffer: 5% NFDM/TBST
Primary ab dilution: 1:2000
Primary ab incubation condition: 2 hours at room temperature
Secondary ab: Goat Anti-Rabbit IgG H&L (HRP)
Lysate: HeLa, MEF, S2, S. cerevisiae
Protein loading quantity: 20 µg
Exposure time: 60 s
Predicted MW: Multiple kDa
Observed MW: Multiple kDa

Research Use

For research use only, not for use in diagnostic procedures.

APPLICATIONS WB: Western blot IP: Immunoprecipitation
IHC-P: Immunohistochemistry-Paraffin ChIP: Chromatin Immunoprecipitation
ICC/IF: Immunocytochemistry/Immunofluorescence FC: Flow Cytometry

MODIFICATIONS
bz: benzoylated cr: crotonylated hbb: β-hydroxybutyrylated bu: butyrylated
pr: propionylated su: succinylated hib: 2-hydroxyisobutyrylated la: lactylated
un: unmodified

CONTACT US

Tel: 400-100-1145
Email: service@ptm-biolab.com
Web: www.ptm-biolab.com.cn

China

400-100-1145
service@ptm-biolab.com
www.ptm-biolab.com.cn

Global

+1 312-802-6843
info@ptm-biolab.com
www.ptmbiolabs.com