

Anti-Succinyllysine Rabbit pAb



Catalog # PTM-401

General Information

Clone Number	/
Host Species	Rabbit
Clonality	Polyclonal
Isotype	IgG
Conjugate	Unconjugated
Synonyms	Ksu
UniProt ID	/
Immunogen	Succinylated lysine peptides
MW (kDa)	Multiple
Specificity	Anti-Succinyllysine Rabbit pAb detects proteins with succinylated lysine residues. This pan antibody recognizes succinylated lysine independent of its surrounding sequences.

Product Usage Information

Applications	Dilution	Recommended Species
WB	1:500 – 1:1000	All

Properties

Purity	Protein A and immunogen affinity purified
Constituents	PBS, Glycerol, BSA
Storage	Store at -20°C. Avoid freeze/thaw cycles.
Stability	Stable for 12 months from date of receipt/reconstitution.

Target Information

Background	Succinylation is a post-translational modification where a succinyl group (-CO-CH ₂ -CH ₂ -COOH) is added to a lysine residue of a protein molecule. This modification is found in many proteins, including histones. The potential role of succinylation is under investigation, but as addition of succinyl group changes lysine's charge from +1 to -1 (at physiological pH) and introduces a relatively large structural moiety (100 Da), bigger than acetylation (42 Da) or methylation (14 Da), it is expected to lead to more significant changes in protein structure and function.
Cellular Localization	/

FOR RESEARCH USE ONLY. NOT FOR USE IN DIAGNOSTIC PROCEDURES.

APPLICATIONS ELISA: Enzyme-Linked Immunosorbent Assay WB: Western Blot
IHC-P: Immunohistochemistry (Paraffin) ICC/IF: Immunocytochemistry/Immunofluorescence
FC: Flow Cytometry IAP: Immunoaffinity Purification IP: Immunoprecipitation
ChIP: Chromatin Immunoprecipitation mIHC-P: Multiplex Immunohistochemistry (Paraffin)

CONTACT US
Tel:
Email:
Web:

CHINA
400-100-1145
service@ptm-biolab.com
www.ptm-biolab.com.cn

GLOBAL
+1 312-802-6843
info@ptmbio.com
www.ptmbio.com

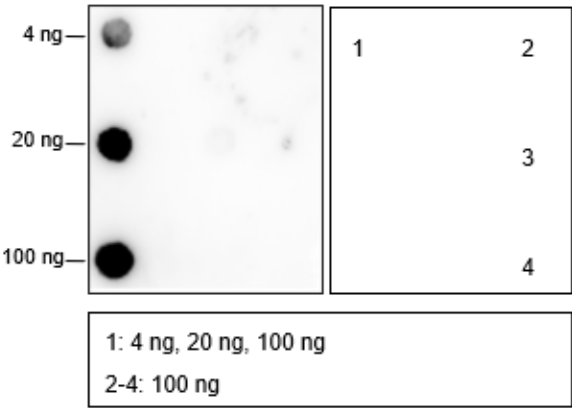
Anti-Succinyllysine Rabbit pAb



Catalog # PTM-401

Images

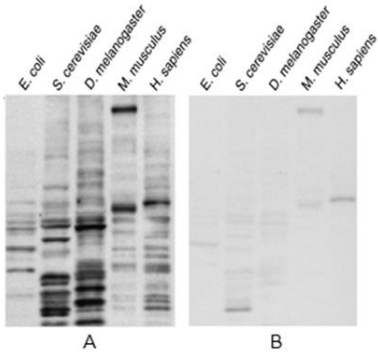
Dot Blot



Peptide amount: 4 ng, 20 ng, 100 ng
Blocking buffer: 5% NFDm/TBST
Primary Ab dilution: 1:2000
Primary Ab incubation condition: 2 hours at room temperature
Secondary Ab: Goat Anti-Rabbit IgG H&L pAb (HRP Conjugate)
Exposure time: 30 seconds
The list of peptides used in the experiment is provided in the table below.

No.	Peptide	No.	Peptide
Lane 1	Ksu library	Dot 2	Kmal library
Dot 3	Kglu library	Dot 4	Control library

WB



Lysates: E. coli, S. cerevisiae, D. melanogaster, mouse, and human cells
Protein loading amount: 20 µg
Blocking buffer: 5% NFDm/TBST
Primary Ab dilution: 1:1000
Primary Ab incubation condition: 2 hours at room temperature
Secondary Ab: Goat Anti-Rabbit IgG H&L pAb (HRP Conjugate)
Exposure time: 60 seconds
Predicted band size: Multiple
Observed band size: Multiple

MODIFICATIONS
3-NT: 3-nitrotyrosine
bu: butyrylated
glu: glutarylated
me: methylated
ser: serotonyl
ac: acetylated
cel: carboxyethylated
la: lactylated
p: phosphorylated
ub: ubiquitinated
bhb: β-hydroxybutyrylated
cit: citrulline
cr: crotonylated
mal: malonylated
pr: propionylated
un: unmodified

CONTACT US
Tel:
Email:
Web:

CHINA
400-100-1145
service@ptm-biolab.com
www.ptm-biolab.com.cn

GLOBAL
+1 312-802-6843
info@ptmbio.com
www.ptmbio.com